



HONGQI

EXTERIOR COLOURS



Green (Body) +Black (Roof)



Gray (Body) +Black (Roof)



Black



White (Body) +Black (Roof)



Gray

WHEEL HUB



245/40 R19

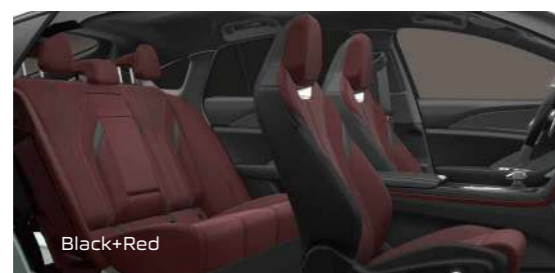


225/50 R18



245/45 R18

INTERIOR COLOURS



HONGQI H6 Product Equipment Description		
	2.0T Luxury	2.0T Flagship
Basic parameter		
Length*Width*Height [mm]	4990*1880*1455	
Wheelbase [mm]	2920	
Acceleration 0-100 km/h [s]	7	
Engine		
Engine model	CA4GC20TD-34	
Displacement [L]	2.0	
Number of cylinders	4	
Max power [kW]	185	
Max Torque [Nm]	380	
Fuel consumption [L/100km] (WLTC)	6.6	
Idle stop-start system	0	
Driving System		
Drive mode	FF:Front—engine Front—drive	
Transmission	8AT	
Tyre	R19	R19
Spare Tyre	—	
Chassis/Steering System		
Front suspension type	MacPherson Strut	
Rear suspension type	Multi Link Suspension	
Steering system	EPS	
Safety Specification		
Driver airbag , front passenger airbag & front seats airbags	0	0
Driver knee airbag	0	0
Dual curtain airbags	0	0
Rear seats airbags	0	0
Front seats double pre-tightening and two-stage force limiting seatbelt with lock-tongue	0	0
Seatbelt-two sides of the rear seats	0	0
Seatbelt reminder-front	0	0
Seatbelt reminder-rear	0	0
ABS+EBD+TCS+ESP+EPB	0	0
TPMS(with pressure display and warning)	0	0
Hydraulic brake assist (HBA)	0	0
Hydraulic brake booster (HBB)	0	0
Hill-start assist control(HAC)	0	0
Front parking sensor	0	0
Rear parking sensor	0	0
Lane departure warning (LDW)	0	0
Lane keeping assistance(LKA)	0	0
Blind spot detection (BSD)	0	0
Autonomous emergency braking (AEB)	0	0
Forward collision warning system (FCW)	0	0
Rear collision warning system (RCW)	0	0
Door opening anti-collision warning system	0	0
Lateral warning system for reversing	0	0
Lane change assist system	0	0
Fatigue monitoring system	0	0
E-CALL (for GCC nations)	0	0
Lighting System		
LED headlamp+daytime running lamp+position lamp+brake lamp	0	0
Front fog lamp (reflective+low speed turning auxiliary lighting)	0	0
Automatic leveling system (ALS)	0	0
Intelligent high-beam control (IHC)	0	0
Adaptive Driving Bbeam (ADB)	—	0
Sunshade vanity mirror with lamp	0	0
Rear reading light	0	0
Exterior ambient lighting-outside mirror	—	0
Interior ambient lighting B (two footwells)	0	—
Interior ambient lighting C (two footwells , dashboard ,four door trims , Front lower area of auxiliary instrument panel)	—	0
Seats		
Seat material: Microfiber Leather+PVC	0	—
Seat material: Leather+Microfiber Leather+chamois leather	—	0
Driver's seat electrical adjustments (12-way) with position memory function	0	0
Front passenger's seat electrical adjustments (4-way)	0	0
Rear seat center armrest and cup holder	0	0
Front seats with ventilation function	0	0
Driver's seat with message function	—	0

HONGQI H6 Product Equipment Description		
	2.0T Luxury	2.0T Flagship
Ventilation & Visibility		
Automatic A/C (2 Zone)	0	0
Negative oxygen ion generator	—	0
Air quality system(AQS)	0	0
PM2.5 air cleaning system	—	0
Visual display of air cleaning process	—	0
Reversing view	0	—
Around view monitor(AVM)	—	0
Rain conductive front windshield wiper	0	0
Electrical adjustment outside mirrors	0	0
Electrical adjustment outside mirrors with electrical folding,lock folding,heating function	0	0
Electrical adjustment outside mirrors with electrical folding,lock folding,heating,position memory function,reverse automatic rolling down function	—	0
Manual anti-glare interior mirror	0	—
Automatic anti-glare interior mirror	—	0
Sunroof	0	0
Entertainment		
Multimedia infotainment system	0	0
LCD multimedia screen	0	0
Dynaudio audio system with 8 speakers	0	—
Dynaudio audio system with 12 speakers	—	0
Digital audio broadcasting(DAB)	0	0
Convenience		
LCD screen instrument	0	0
Remote key to start the engine	0	0
Front door keyless entry	0	0
PVC multi-function steering wheel	—	—
Leather multi-function steering wheel	—	—
Leather+Carbon fiber+Alcantara multi-function steering wheel	—	0
Steering wheel 4 ways manual adjustment	0	0
HUD	—	0
120km/h speed limit warning	0	0
USB sockets, front 2 (typeA+typeC)	0	0
USB sockets, front 2 (typeA+typeC) , Rear 2 (typeA+typeC)	0	0
USB socket, topceiling 1	0	0
Wireless phone charging-15W	0	0
Drive Mode (Eco, Comfort, Sport, Custom)	0	0
Cruise control	0	—
SACC		
AUTOHOLD	0	0
Controlled deceleration for parking brake(CDP)	0	0
Carplay(wired)+Android auto(wired)	0	0



2025 HONGQI H6



Azaiba

800 80 777

hongqi-oman.com

/HongqiOman

Hongqi-Oman

@Hongqi.Oman

@HongqiOman

Stunning Power Ultimate Performance

Powerful Performance

Innovatively developed in-house, the new generation powertrain technology offers a 2.0T engine with both high and low power configurations paired with an 8AT transmission, delivering an exhilarating acceleration experience of 0-100 km/h in just 6.8 seconds. The engine's powerful surge is ready to unleash.

Continuous Damping Control Shock Absorbers

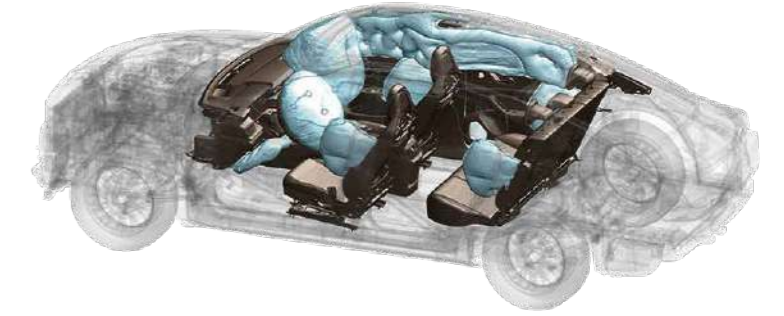
With swift and precise handling response, these shock absorbers enhance driving pleasure and deliver an unparalleled driving experience. They not only improve comfort but also ensure the vehicle's stability during high-speed driving and continuous corners, keeping every road firmly under control.



Striking Aesthetics Dynamic Elegance



Outstanding Safety Peace of Mind



Five-star Safety

Achieving the 2021 C-NCAP five-star safety rating, with over 68% high-strength steel in the body structure, the vehicle ensures robust and reliable safety for all occupants. Strong protection, creating an impenetrable safety barrier.



Active Safety

With 11 active safety features, including optimizations for night driving scenarios, the vehicle offers 24/7, all-scenario protection. Actively guarding you, helping you drive with confidence.



Health and Safety

Featuring 23 environmental patents, along with active air purification technology and negative ion generator, the vehicle ensures a fresh, post-rainforest quality of air. Your breathing is safeguarded, ensuring you start your journey feeling rejuvenated.



9 Airbags

With 9 airbags, this vehicle leads its segment in airbag coverage. Designed with people at its core, the vehicle features a flexible, wraparound protection system for all occupants, ensuring comprehensive safety for everyone in the vehicle.

Unmatched Comfort Perfect Companionship



Dynamic Exterior

The sleek side waistline complements the fastback design, while the hatchback tailgate and centrally positioned exhaust system enhance the vehicle's sporty and modern appeal. Its agile stance is sure to capture admiration at first sight.

Fashionable Interior

Flowing lines, a wraparound instrument panel, a central axis-style secondary panel, and a large vertical screen interact seamlessly, creating a sense of fluidity that flows effortlessly from top to bottom. Everywhere you look, it reflects sophisticated style.



Intelligent Technology Boundless Interconnectivity

Smart Driving

Equipped with the class-leading SACC advanced cruise control, travel becomes smarter and easier. The AVM combined with a transparent chassis and intelligent auto parking assist system enhances the parking experience. Intelligent performance, putting you in full control of the road ahead.

Class-leading Space

With a length close to 5 meters and a wheelbase exceeding 2.9 meters, the vehicle's cabin offers space equivalent to a C-segment vehicle, leading its class with exceptional comfort. Spacious, relaxing, and perfect for long journeys, it ensures a refreshing travel experience.

Luxurious Comfort

The specially designed integrated sports seats, featuring 8-point air massage, heating, and ventilation functions, provide quick relief from fatigue. Every touch and feel reflects extraordinary taste and comfort.

